

DISCOVER

---

# CLAREMONT

From economy to boutique, Claremont's 461 hotel rooms provide guests with inviting rooms and peaceful nights. The five properties include three locally owned motor inns near Interstate 10, a full-service hotel and conference center on Historic Route 66 for business travelers and guests, and an upscale boutique property in downtown Claremont that caters to couples and business travelers alike.



## HOTEL CASA 425

**425 W. First Street**

A stylish boutique hotel and lounge opening onto a tranquil courtyard in the heart of historic Claremont Village. Located within steps of fine restaurants, cafes, boutiques, art galleries and the Claremont Colleges, Casa 425 is the only sophisticated boutique hotel in Southern California's Inland Empire. The hotel merges California mission architecture with contemporary styling and features 28 sophisticated guest rooms, an onsite lounge and full bar, a beautiful outdoor living room featuring water fountains and fire pits, meeting and event space and more.

Total Rooms - 28  
 Double Rooms - 4  
 Suites / Junior Suites - No  
 Rates Range - \$235-\$495  
 Breakfast - Yes  
 Bus / RV Parking - No  
 In-Room Coffee/Tea - Yes  
 Preferred Group Size - 3-20  
 Sales Contact Info -  
 909-624-2272  
 audrey@foursisters.com  
 megan@foursisters.com

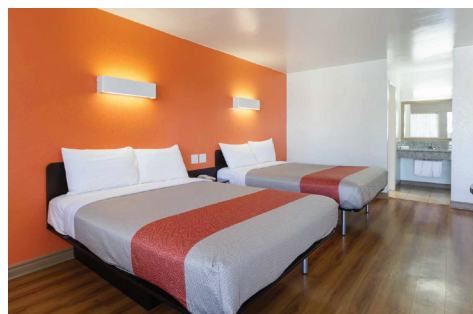


## DOUBLETREE BY HILTON HOTEL CLAREMONT

**555 W. Foothill Blvd.**

The hotel's elegant, contemporary guest rooms and suites offer comfort and convenience with luxurious Sweet Dreams® beds, in-room safes, refrigerators, and high-speed Internet access. Relax with friends, alumni or business associates in its lush courtyard, enjoy a cocktail or meal by the waterfall, and dine in casual elegance at **The Orchard Restaurant**, serving a wide selection of California Mediterranean Fusion influenced dishes. After hours, **Piano Piano's** high-energy, all-request show will keep guests singing and laughing into the night! And don't forget about those famous DoubleTree cookies.

Total Rooms - 195  
 Double Rooms - 90  
 Suites / Junior Suites - 9  
 Rates Range - \$179-\$409  
 Breakfast - Available  
 Bus / RV Parking - Yes  
 In-Room Coffee/Tea - Yes  
 Preferred Group Size - 10-300  
 Sales Contact Info -  
 Shirlene Nowling  
 909-445-1924  
 Shirlene.nowling@hilton.com



## MOTEL 6 CLAREMONT

**840 S. Indian Hill Blvd.**

Motel 6 Claremont features one of Southern California's finest tennis facilities available year-round with eight lighted championship courts. Guest amenities include free Wi-Fi, free local shuttle, and free use of its tennis courts. Park-like grounds available to rent for special events.

Total Rooms - 121  
 Double Rooms - 92  
 Suites / Junior Suites - No  
 Rates Range - \$69-\$199  
 Breakfast - No  
 Bus / RV Parking - Yes  
 In-Room Coffee/Tea - No  
 Preferred Group Size - Any  
 Sales Contact Info -

Steven Mercado  
 909-621-4831 x-103  
 m68600bo@6franchise.com



## CLAREMONT LODGE

**736 S. Indian Hill Blvd.**

Enjoy unbeatable accommodations near the cultural and recreational center of Southern California with comfortable stylish rooms, including available jacuzzi suites. Amenities include an outdoor swimming pool and free Wi-Fi.

Total Rooms - 56  
 Double Rooms - 11  
 Suites / Junior Suites - Yes  
 Rates Range - \$90-\$150  
 Breakfast - No  
 Bus / RV Parking - Yes  
 In-Room Coffee/Tea - Yes  
 Preferred Group Size - 10  
 Sales Contact Info -  
 909-626-5654